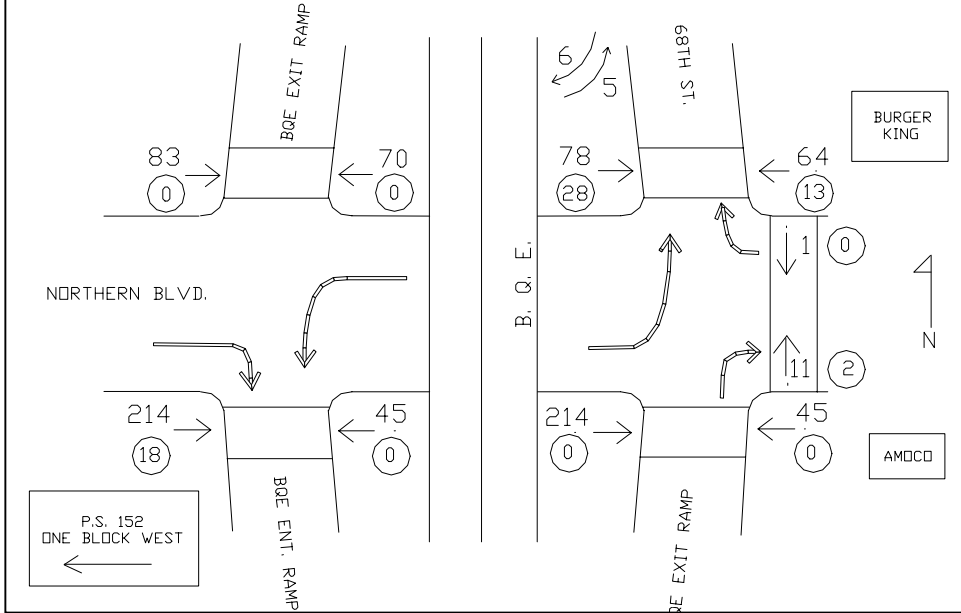


Pedestrian/vehicle conflicts AM Peak



HIGHWAY INTERCHANGE DESIGN FOR PEDESTRIANS & TRAFFIC

As an outgrowth of managing a very proactive public outreach program for NYSDOT on the reconstruction of the northern segment of Brooklyn Queens Expressway (BQE), Konheim & Ketcham has introduced several pedestrian features into the redesign of a major interchange of the highway at Northern Boulevard. In response to community concerns about the difficulty children have negotiating the complex set of intersections en route to a nearby school, K&K achieved the support of project engineers, URS Greiner, and NYSDOT to undertake a comprehensive analysis of pedestrian conditions. Using time lapse photography, video, and documentation of pedestrian/vehicle conflicts, K&K identified the problems in such a compelling way that City and State officials adopted a redesign of the interchange that prioritizes safe pedestrian movement. Crosswalks are located to follow desire lines, minimize pedestrian exposure time, and provide the best sight lines for both pedestrians and drivers. Large planters and trees will make refuge islands safer and more pleasing way stations. Signals will have a pedestrian lead phase and incorporate new technology that prompts pedestrians to search both ways for turning vehicles.