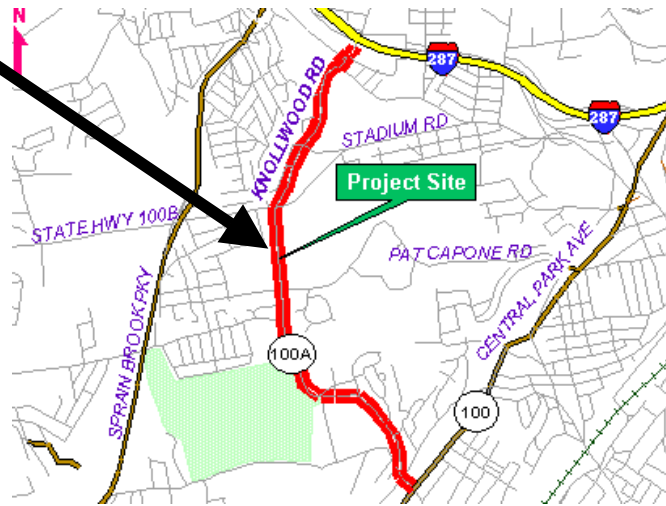
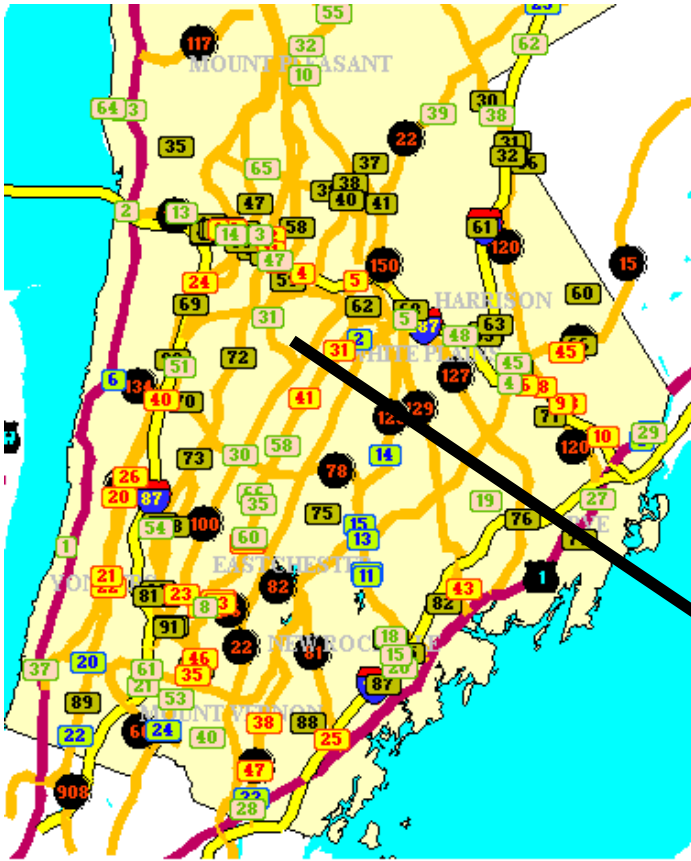


- Roadway Network
- Areas of Interest
- Cities & Towns
- Roadway Improvements (CCP)
- Intersection Improvements (CCP)
- Bridge Improvements (CCP)
- NYS TIP Projects
- County Projects
- Demographics



00 Bridge Improvement (CCP)      00 Roadway Improvement (CCP)  
00 Intersection Improvement (CCP)      00 TIP Projects Not in CCP

**Route 100a; Route 100 to I-287; and Route 100b; Route 100a to Route 119: pavement restoration, minor drainage improvements.**

### AN INTERNET-TIP PROTOTYPE

A successful prototype of a geographic information system (GIS)-based Transportation Improvement Program (TIP) accessible on the internet may be found on [www://transport-link.com](http://www://transport-link.com). The *Internet TIP* was developed by Konheim & Ketcham, Inc. with funding from the U.S. Department of Transportation. The next generation *Internet TIP* will provide a uniform system for reporting a variety of TIP formats, using a fully dynamic GIS to locate TIP projects and display them in their political and demographic setting, and in relation to other projects. It will link easily to descriptions of purpose, cost, and schedule of projects through various query functions. It would create an easily updatable reporting format that minimizes the demands on staff and reduces the cost of updating and disseminating voluminous TIP documents. By operating in both intranet and internet modes, it would permit appropriate users to download data and exchange comments to facilitate communication among all parties.